



# SAILING INSTRUCTIONS

## 2022 Lady Driver Race September 11, 2022

HOSTED BY:

Ventura Yacht Club

1755 Spinnaker Drive

Ventura, California 93001

- RULES:** This event will be governed by the current Racing Rules of Sailing, the Prescriptions of the United States Sailing Association, the Rules of the PHRF, the Notice of Race for this event, and these 2022 Lady Driver Sailing Instructions, the last of which shall prevail in the event of conflict with any of the former. At least one female must be onboard, and a female must be at the helm during the race (periodic short breaks are allowed, but not during the starting sequence, while rounding marks, or while finishing). Boats can have more than one lady driver. Each boat shall have valid, third-party liability insurance that provides for a minimum coverage of \$300,000/incident. Yacht Club or PHRF membership is **not** required. The Race Committee intends to set a course so that PHRF Area A Random Ratings may properly be used. Boats without a valid PHRF handicap will be assigned a temporary handicap.
- ENTRIES:** Eligible boats may enter by completing registration with Ventura Yacht Club. Entry deadline is 1700 on Wednesday, September 8<sup>th</sup>. Competitors are urged to register online by going to [www.venturayachtclub.org](http://www.venturayachtclub.org) and following the link (Water>Racing>Regatta Network). It's easy! Additional information may also be available there. The entry fee is \$45.00 (\$40 for current USSailing members). **NOTE!** If a minimum of 3 entries are not received on or before the above-noted deadline, this race will be canceled.
- NOTICES TO COMPETITORS:** Notices to competitors will be posted on the official Race Notice Board located on the VYC downstairs patio.
- CHANGES TO SAILING INSTRUCTIONS:** Changes to the sailing instructions will be posted before 0900 hours on race day. Oral instructions from the Race Committee (RC) on station will be signaled by display of code flag "L" on the RC signal boat.
- SCHEDULE OF RACE:** The warning signal for the first class is scheduled for 1125.
- CLASSES:** Depending on the number and type of competing vessels, spinnaker and non-spinnaker classes are planned. Classes (and class flags) will be established at the skippers meeting.
- THE COURSE(s):** The course(s) will be chosen from the VYC Coastal Course Chart which is part of these Sailing Instructions. Designation of the course to be sailed will be signaled from the Race Committee boat before or with the warning signal for each starting class.



# SAILING INSTRUCTIONS

8. **CHECKING IN:** Each boat is required to check-in after the RC boat is anchored. A boat may check-in either by sailing close by the stern of the committee boat and hailing her sail number until acknowledged by the RC or by calling the RC on VHF channel 69. A boat will not be considered as checked in until affirmatively acknowledged by the Race Committee.
9. **THE START:**
  - a. The race will be started in accordance with Racing Rule 26. The order of the starts will be announced at the skipper's meeting.
  - b. The starting line will be between the Mandalay buoy as the port-side mark and an orange flag or shape mounted on the Committee Boat as the starboard-side mark.
  - c. Boats whose preparatory signal has not been made shall keep clear of the starting area and of all boats whose preparatory signal has been made.
  - d. There may be a courtesy signal (multiple sounds) one (1) minute prior to the beginning of the start sequence.
10. **RECALLS:**
  - a. Individual recalls will be signaled in accordance with Racing Rule 29.1 [code flag "X" and 1 sound signal].
  - b. After the starting signal, the Race Committee may attempt to hail the sail number(s) of the recalled boat(s) on VHF Channel 69. The following shall not be grounds for granting redress:
    - i. Failure of a boat to hear the recall hail or broadcast.
    - ii. A boat's position in the sequence of hailed numbers or broadcast numbers.
    - iii. Failure of the Race Committee to hail or broadcast numbers.
  - c. General recalls will be signaled in accordance with Racing Rule 29.2 [code flag "first substitute" and 2 sound signals]. A new warning signal for the recalled class will be made one minute after the "first substitute" is lowered. When a general recall has been signaled, the starts for the succeeding classes shall follow the new start for the recalled class.
11. **THE FINISH:** The finish shall be on a line from the VYC clubhouse balcony to the green light standard (#3) near the south end of the detached Ventura Harbor breakwater. Competitors are requested to notify the RC when approximately 1/2 hour from the finish. If the RC is not on station, boats shall record their own finish times. The RC will monitor VHF Channel 69 throughout the race.
12. **TIME LIMIT:** If any boat in a class finishes before 1700, the race is valid for that class. If no boat in a class finishes before 5pm, the race may be abandoned for that class.
13. **RETIREMENT:** A boat that has started and subsequently retires is requested to notify the RC as soon as possible. The RC will monitor VHF channel 69. If contact cannot be made by VHF, retiring competitors should call VYC Race Chair Jim Dembowski at 805-256-0770.
14. **PROTESTS:** Protests shall be written on forms available at the club and shall be filed with the Race Committee within 1 hour of the finish time of the protesting boat (or within 1 hour of her return to harbor if she retires).
15. **SCORING:** In accord with Section 2.2 of the PHRF Class Rules, PHRF ratings shall be used to score the relative performance of competing boats:



## SAILING INSTRUCTIONS

- a. W/L Ratings are intended to be used when the course is expected to be primarily windward/leeward legs on courses set in relation to the wind.
- b. RLC Ratings are intended to be used when the course type is neither W/L nor OWC. OWC Ratings are intended to be used when at least 2/3 of the course distance is expected to be more than 135 degrees from true wind direction.
- c. The Low Point Scoring System (Appendix A of the *RRS*) will apply.

**16. SAFETY:** Minimum crew requirement is 2. Racers are reminded that they are bound by the International Regulations for Preventing Collisions at Sea. All boats must conform with current United States Coast Guard Regulations and US Sailing Safety Equipment Requirements (USSER) for a USSailing Nearshore Race as modified below. [USSERs are available online at [ussailing.org](http://ussailing.org) (click on Safety)].

- a. USS SER 2.4.4 is in effect for this event, but modified to require lifelines even if not uncoated stainless steel.
- b. USS SER 3.19.1 is modified to allow (non-GPS) magnetic compasses such as the TACK TICK and Velocitek Shift provided, however, they must be mounted/tethered to prevent the device from being lost overboard.
- c. USS SER Rule 3.8.2 is in effect for this event but modified to allow a hand-held water-proof VHF or a hand-held VHF with a waterproof cover. DSC/GPS capability is not required.
- d. USS SER 3.3.1 is modified to allow running lights that are mounted below deck level.

**17. INSURANCE:** Each boat shall have valid, third-party liability insurance that provides for a minimum coverage of \$300,000/incident.

**18. NON-SPINNAKER CLASS DEFINITIONS:** No spinnakers are allowed. All headsails must meet the measurements of Racing Rule 50.4. Only one spinnaker pole or whisker pole may be used at a time and, when in use, shall be attached to the foremost mast. Use of headsails larger than 155% LP carries a 6 second per mile penalty unless the boat is already handicapped for such larger sail. Only one headsail may be carried set and must be attached to the headstay.

**19. TROPHIES:** Awards will be presented after racing at VYC. Competitors and guests are encouraged to attend.



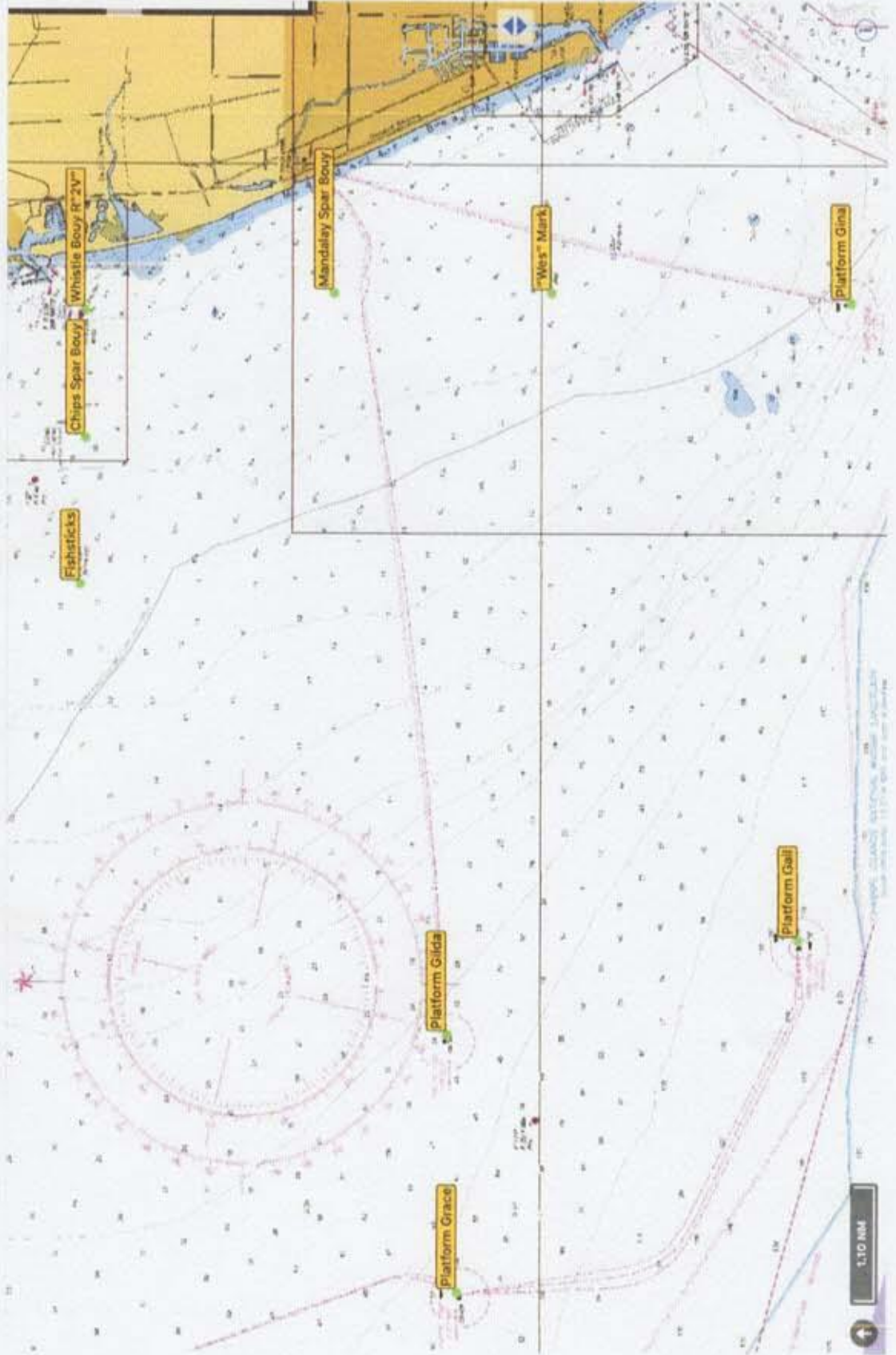
# SAILING INSTRUCTIONS



## VYC Coastal Course Chart



Chartlet taken from NOAA 18725\_1 Port Hueneme To Santa Barbara Not to be used for Navigation





# SAILING INSTRUCTIONS

Course 1 - 8 use an inflatable mark

#	Course	Approx. Heading	M start	R2 start
1	S Wp Mp R2s F	To be posted on R/C signal boat		
2	S Wp Ms R2s F			
3	S Wp Mp As F			
4	S Wp Ms As F			
5	S Wp Mp R2p Cp F			
6	S Wp Ms R2p Cp F			
7	S Wp Mp R2p Ap F			
8	S Wp Ms R2p Ap F			
9	S Bs R2s Ms R2s F	164	11.85	14.33
10	S Bs G1s R2s F	164	18.64	21.12
11	S Bs Mp G2s F	164	19.97	22.45
12	S Bs G4s F	164	22.44	24.92
13	S Bs R2s F	165	6.94	9.42
14	S Bs As F	165	10.34	12.82
15	S G3s As F	165	15.88	18.36
16	S G3s R2s F	167	12.79	15.27
17	S G3s Bs G3s R2s F	167	18.65	21.13
18	S G3s Cp Ap R2p Ap F	167	21.90	24.38
19	S G3s Ms G3s R2s F	167	22.76	25.24
20	S G3s G1s R2p Ap F	167	26.32	28.80
21	S G3s R2s G3s R2s F	167	27.72	30.20
22	S G1s R2s F	220	17.57	19.10
23	S G1s Cp Ap F	220	20.81	22.34
24	S G1s As Cs As F	220	21.36	22.89
25	S G1s R2p Ap F	220	22.73	24.26
26	S G1p G3p G1s R2s F	220	30.37	31.81
27	S G2s Mp R2s F	247	17.76	18.33
28	S G2s Cp Ap F	247	18.81	19.38
29	S G2s R2p Ap F	247	20.95	21.52
30	S G4s F	249	20.40	20.79
31	S G4s Cp Ap F	249	23.34	23.73
32	S G4s G2s G4s F	249	25.72	26.11
33	S G2s F	250	15.85	16.42
34	S Ap G4p F	298	22.12	20.98
35	S Ap Ms G2s F	298	23.27	22.13
36	S Ap Ms G4s F	298	27.82	26.68
37	S Ap G3p R2s F	298	19.46	18.32
38	S As F	300	6.64	5.50
39	S As R2p Cp F	300	9.08	7.95
40	S As Mp R2s F	300	10.21	9.07
41	S As R2p As F	300	11.78	10.64
42	S As Bp R2s F	300	13.94	12.80
43	S As Mp R2p As F	300	15.37	14.23
44	S R2p G2p F	341	18.87	N/A
45	S SCp R2s F	225	34.9	
46	S PRp R2s F	233	47.6	

MARKS		APPROXIMATE LOCATION	
A	Fish Sticks spar buoy	L: 34° 14.45'N	Lo: 119° 19.85'W
B	"Wes" Mark	L: 34° 09.9'N	Lo: 119° 16.5'W
C	Chips spar buoy	L: 34° 14.444'N	Lo: 119° 18.225'W
M	Mandalay spar buoy	L: 34° 12.0'N	Lo: 119° 16.483'W
R2	Whistle buoy R"2V"	L: 34° 14.4'N	Lo: 119° 16.7'W
F	Finish at Ventura Harbor	L: 34° 14.745'N	Lo: 119° 16.325'W
G1	Platform Gail	L: 34° 07.5'N	Lo: 119° 24.0'W
G2	Platform Gilda	L: 34° 10.9'N	Lo: 119° 25.1'W
G3	Platform Gina	L: 34° 07.0'N	Lo: 119° 16.6'W
G4	Platform Grace	L: 34° 10.8'N	Lo: 119° 28.1'W
SC	SCorpion Anch buoys (2)	L: 34° 02.98'N	Lo: 119° 33.32'W
PR	PRisoners Hbr buoy	L: 34° 01.25'N	Lo: 119° 41.12'W
W	Inflatable Buoy	.05 miles from M mark	